



Pierce County Council Special Appointment **SHERIFF**

As a result of the Pierce County Sheriff's retirement in March 2020, a vacancy will exist in the position of Sheriff.

Job Title: Sheriff
Salary: **\$163,556** Annually (2020)
Department: Sheriff's Department

Apply Online: www.piercecountywa.gov/sheriffappointment

About the Pierce County Sheriff

The Office of Pierce County Sheriff is created by the Pierce County Charter as an Executive Department. The Sheriff is a full time, nonpartisan position elected by the voters of the County. The Sheriff is eligible to serve three consecutive 4-year terms.

Key Duties and Responsibilities

Section 2.06.020 of the Pierce County Code provides that the Sheriff's Department shall be headed by the elected Sheriff. The Department consists of four bureaus: Corrections, Administrative Services, Patrol, and Criminal Investigations.

The Sheriff's Department provides police services and manages the Pierce County Jail. Services include response to calls for service, uniformed patrol, crime prevention, crime scene examination, and criminal investigations in response to the needs of citizens living and working in unincorporated Pierce County. The Department also provides traffic law enforcement, accident investigations, as well as response to a variety

of hazards, emergencies, and crisis situations. The Sheriff's Department deploys a number of highly trained, specialized units in handling these varied and vital responsibilities.

The Corrections Bureau was established within the Sheriff's Department to separately account for the Pierce County Jail facilities. The inmate population includes male and female inmates from Pierce County, and occasionally, the federal government. Inmates may be sentenced up to one year in the County jail and may be in the jail on misdemeanor and/or felony charges. The Sheriff's Department is responsible for the management of the County Jail.



Pierce County Council Special Appointment

Pierce County Sheriff



SPECIAL REQUIREMENTS + QUALIFICATIONS

- Ability to successfully complete all required background investigations.
- A valid Washington state driver's license.
- At the time of appointment and at all times while holding office, the Sheriff must be a citizen of the United States, and a resident and registered voter of Pierce County.
- Peace Officer status in the State of Washington preferred.

Additional Information

To be considered for this opportunity please:

Complete and submit an online Pierce County Employment Application by selecting "APPLY" or go to: www.piercecountywa.gov/sheriffappointment. Submit the following; 1) a Cover Letter, 2) a Resume, 3) Three Professional References with your online application. **Applications will be accepted through 4:30 p.m. on Monday, Jan. 27, 2020.**

If you do not have internet access, you may visit your local public library or any WorkSource location and use their computers.

Individuals needing accommodation in the application, testing process or need this job announcement in an alternative format you may call Human Resources at (253) 798-7480, at least two days prior to the need.

This is a competitive selection process. Applicants whose qualifications most closely correspond to the County's needs will be eligible for further consideration.

As an Equal Employment Opportunity Employer, Pierce County welcomes a diverse workforce. Pierce County does not discriminate based on race, creed, religion, color, national origin, sex, sexual orientation, marital status, age, disability, veteran status, the presence of any sensory, mental, or physical disability, or the use of a trained guide dog or service animal by a disabled person.

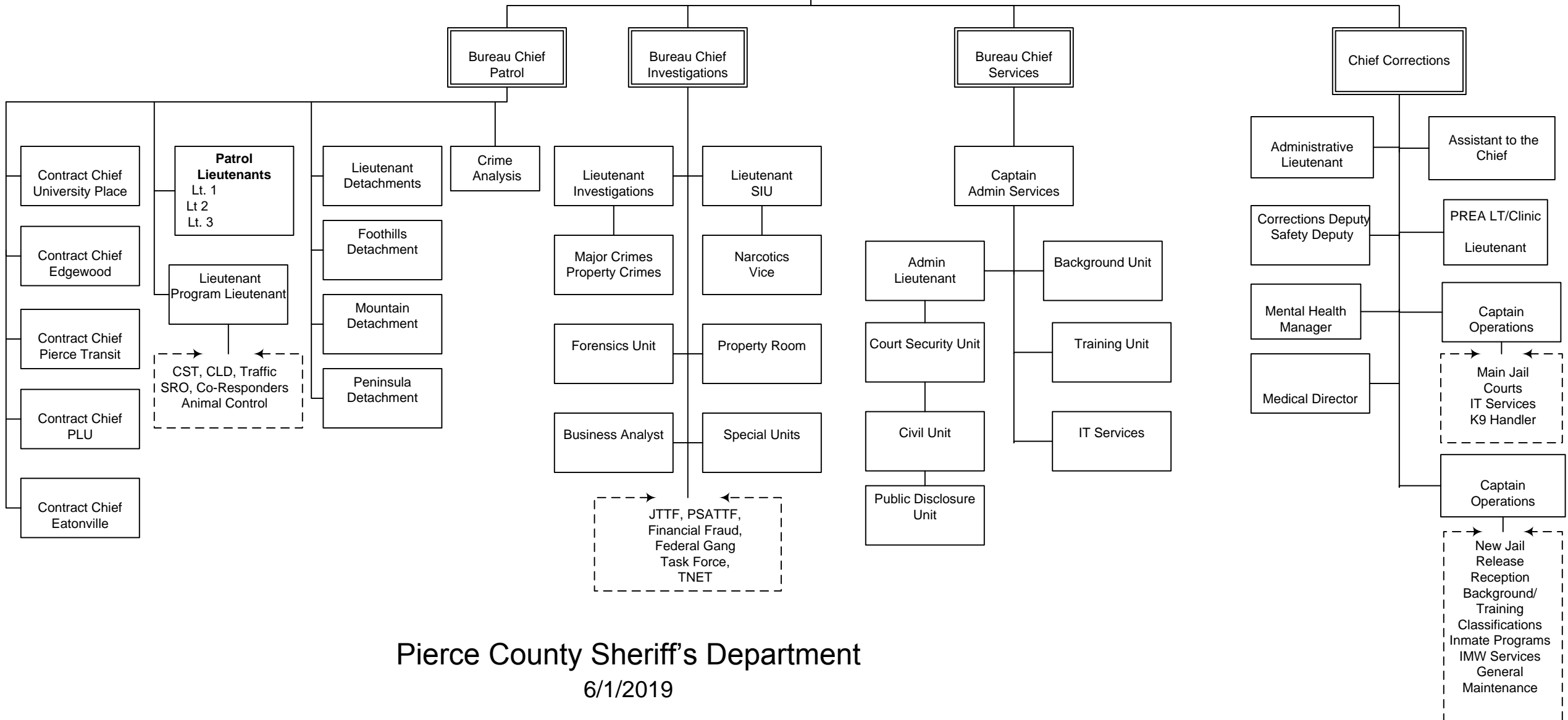
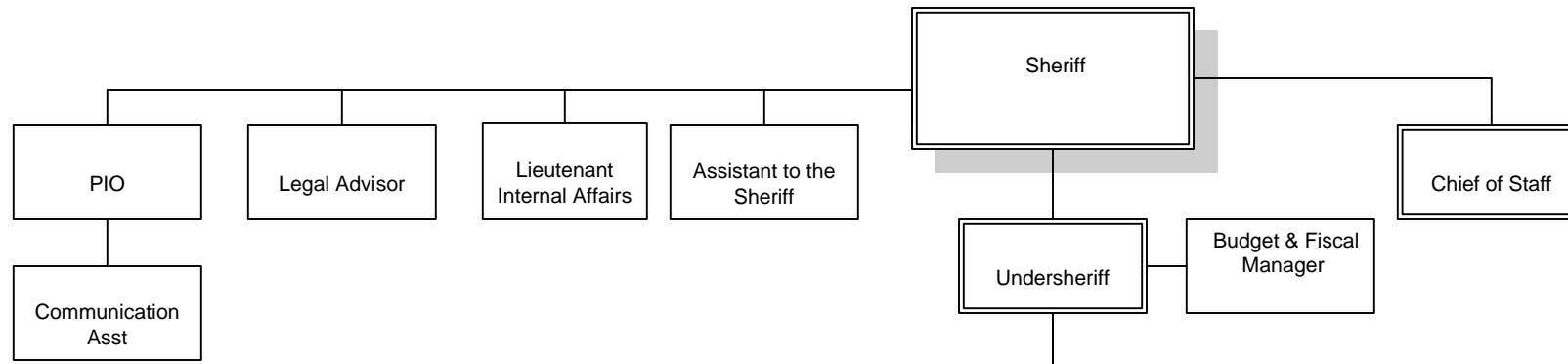
Copy of certificate of basic law enforcement training or certificate of equivalency.

Submit Application online at www.piercecountywa.gov/sheriffappointment

About Pierce County

Pierce County has a population of about 900,000 and is governed by an Executive/Council form of government. The County boasts tremendous outdoor opportunities with miles of Puget Sound waterfront, Mt. Rainier National Park, 361 freshwater lakes, and nationally ranked year-round golf courses in the vicinity, while also offering a wide range of urban amenities.





Pierce County Sheriff's Department
6/1/2019