

EXECUTIVE COUNCIL

Officer Donovan Heavener | Federal Way Police Department
State Director
Director@sowaletr.org

The Torch Run Director is a law enforcement representative who acts as the point of contact statewide and internationally. He/she is responsible for oversight, leading, planning and implementation of the LETR Campaign. The LETR Director sets policies and procedures and ensures Special Olympics Washington's regulations are met to ensure cohesive operations. This person is also responsible for the financial training and infrastructure of the campaign and will serve as the leader for both state co-directors.



Fire Investigator Michael Day | King County Sheriff's Office
Co-Director, West
michael.day@kingcounty.gov



Officer Jay Hughes | Kalispel Tribal Police
Co-Director, East
jhughes@kalispeltribe.com



State Co-Directors are responsible for all awareness and fundraising campaign elements throughout their regions of the state. They will assist in efforts to increase existing sources of revenue, building relationships and new fundraising opportunities through effective communication with the law enforcement community. Co-directors will serve as the main point of contact for all Regional Coordinators.

REGIONAL COORDINATORS

REGION I

Officer Sara, Felty - Bremerton Police Department
Clallam, Jefferson, Mason and Kitsap Counties

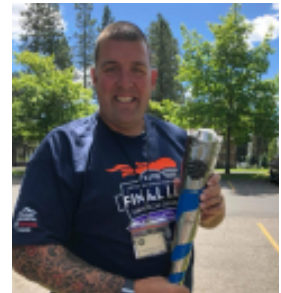
- sara.felty@ci.bremerton.wa.us



REGION II

Officer Patrick Gilbert - Fife Police Department
Pierce, Thurston, Lewis, Grays Harbor and Pacific Counties

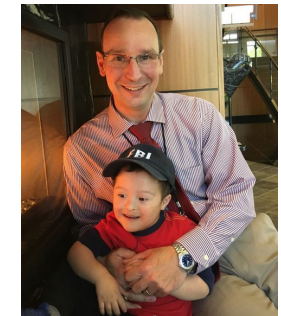
- pgilbert@cityoffife.org



REGION III

Special Agent Mike Rollins - Federal Bureau of Investigation
Wahkiakum, Cowlitz, Clark and Skamania Counties

- mdrollins@fbi.gov



REGION IV

LETR Development Director, Ellie Hardwick - SOWA
Whatcom, Skagit, Island, Snohomish and San Juan Counties

- ehardwick@sowa.org

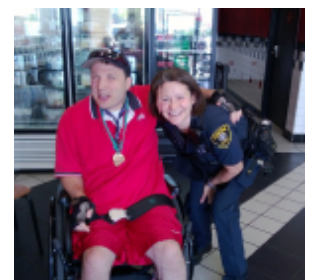


**Special
Olympics**
Washington

REGION V

Officer LeAnn Whitney - Renton Police Department &
LETR Development Director, Ellie Hardwick - SOWA

- lwihitney@rentonwa.gov
- ehardwick@sowa.org



REGIONAL COORDINATORS

REGION VI

Captain Dan Hansberry - Ellensburg Police Department
Yakima, Kittitas and Klickitat Counties

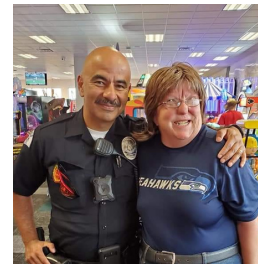
- hansberryd@ci.ellensburg.wa.us



REGION VII

Officer Dan Irish - Hanford Patrol &
Raymond Aparicio - Pasco Police Department
Benton, Franklin and Walla Walla Counties

- danirish17@gmail.com
- aparticior@pasco-wa.gov



REGION VIII

Detective Stephen Evitt - Wenatchee Police Department
Okanogan, Douglas, Chelan and Grant Counties

- sevitt@wenatcheewa.gov



REGION IX

Officer Heather Ernst
Ferry, Stevens, Pend Orielle, Lincoln, and Spokane Counties

- hsayer@spokanecounty.org



REGION X

LETR Development Director, Ellie Hardwick - SOWA
Adams, Whitman, Columbia, Garfield and Asotin Counties

- ehardwick@sowa.org

Law Enforcement Torch Run

Regional Map of Washington

by County



REGION I

- Clallam County
- Jefferson County
- Mason County
- Kitsap County

REGION II

- Pierce County
- Thurston County
- Lewis County
- Grays Harbor County
- Pacific County

REGION III

- Wahkiakum County
- Cowlitz County
- Clark County
- Skamania County

REGION IV

- Whatcom County
- Skagit County
- Island County
- Snohomish County
- San Juan County

REGION V

- King County

REGION VI

- Yakima County
- Kittitas County
- Klickitat County

REGION VII

- Okanogan County
- Douglas County
- Chelan County
- Grant County

REGION VIII

- Benton County
- Franklin County
- Walla Walla County

REGION IX

- Ferry County
- Stevens County
- Pend Oreille County
- Spokane County
- Lincoln County

REGION X

- Adams County
- Whitman County
- Columbia County
- Garfield County
- Asotin County