

NIBRS ~ Tip of the Month

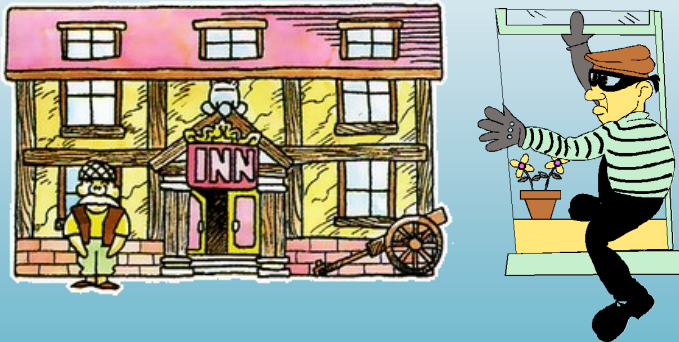
The Hotel Rule applies to only Burglaries of hotels, motels, multi-unit storage facilities, etc.

HOTEL RULE

If a number of units under a single manager are burglarized and the manager, rather than the individual tenants/renters, will most likely report the offense to the police, the agency should report the burglary as a single incident.

What this Includes:

- **Hotel/Motel**
- **Lodging Houses**
- **Lodging of Transients**
- **Temporary Rental Storage**
- **Mini Storage Facility**



You should only report the number of premises when a hotel, motel, inn, other temporary lodging, or a rental storage facility is the location type for the Burglary.